

Comant CI 428-200

ComDat GPS WAAS

2008 Data Sheet

COBHAM

The most important thing we build is trust

CI 428-200 ComDat GPS WAAS

Comant's newest ComDat GPS WAAS antenna designed specifically to meet the GPS WAAS Gamma 3 specifications required by the Garmin G1000 system.

Matches the standard ARINC footprint found on many twins and business jets.

Meets RTCA DO 160D operating standards including direct effects lightning.

Gamma 3 WAAS allows for primary navigation using GPS for all phases of flight including precision LPV approaches.

Not compatible with portable GPS receiver units.

Applications

Most aircraft up to and including business jets. Consult your FBO or installation shop for best application information.

Frequencies Covered

GPS 1575.42 MHz / 26.5 dB Gain

Specifications

GPS Preamplifier Characteristics

Frequency	1575.42 +/-3 MHz
VSWR	1.5:1 Maximum
Polarization	RHCP
Radiation Pattern	Hemispherical
Output Impedance	50 Ohms
Gain @ 1575.42 MHz	26.5-30.1 dB
DC Voltage	4 to 24 Volts
DC Current	40mA Typical / 60mA Max.
Noise Figure	2.5 dB
Selectivity	-40 dB Min. @ Satcom 1626.5 MHz

Mechanical / Environmental

Weight	6.2 Ounces
RTCA Env. / TSO	DO 160D / C 144
Connector	TNC (Female)



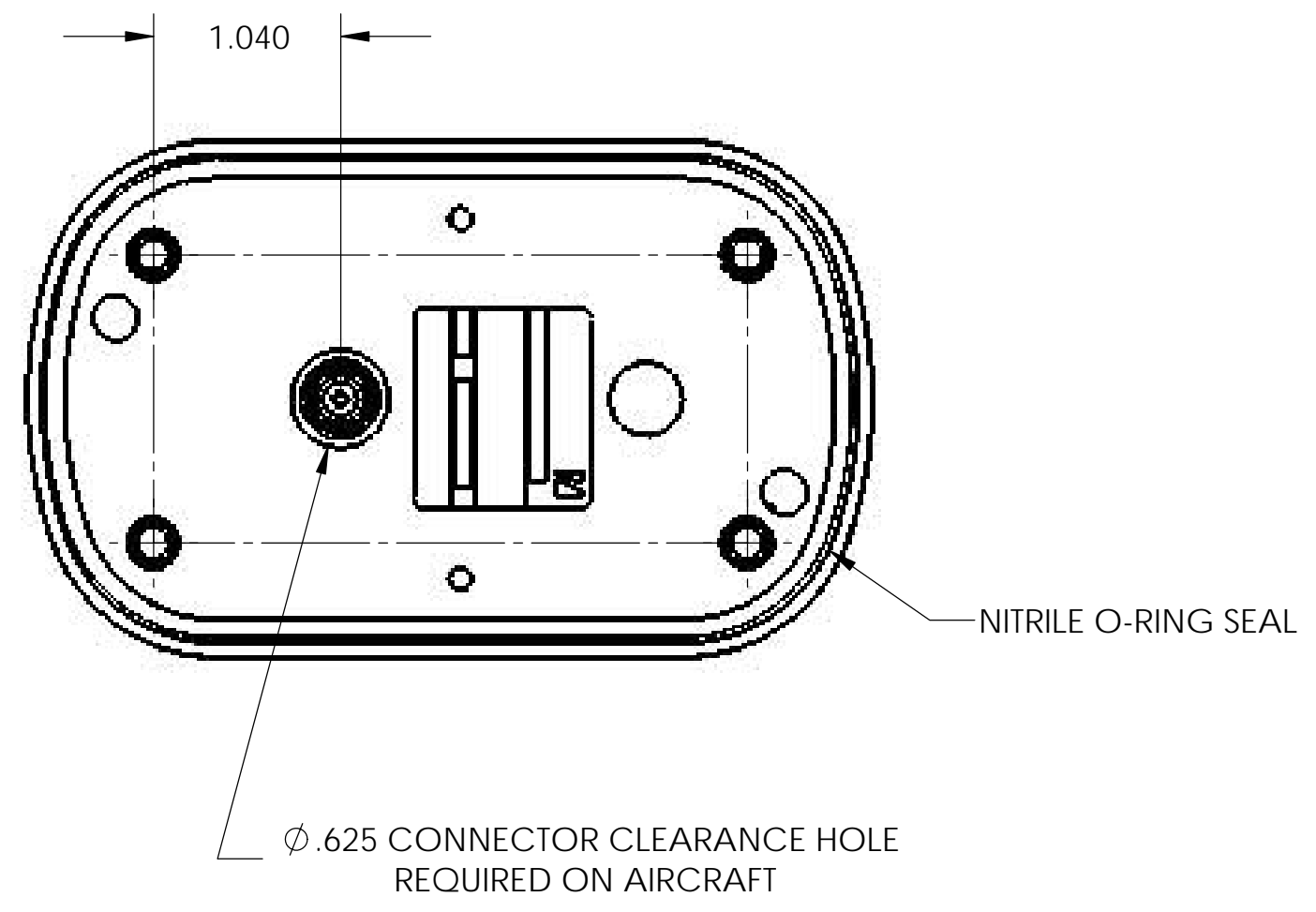
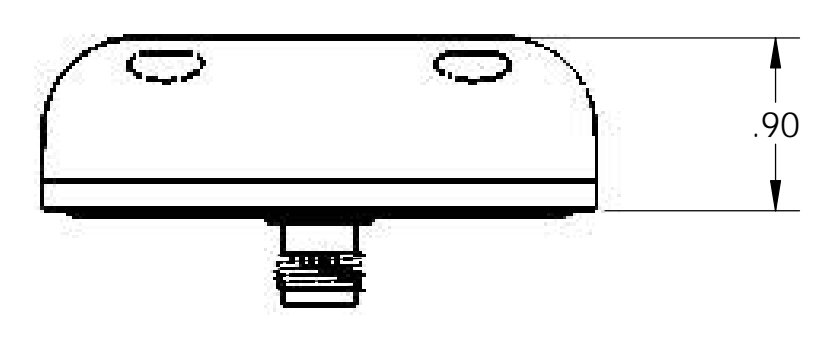
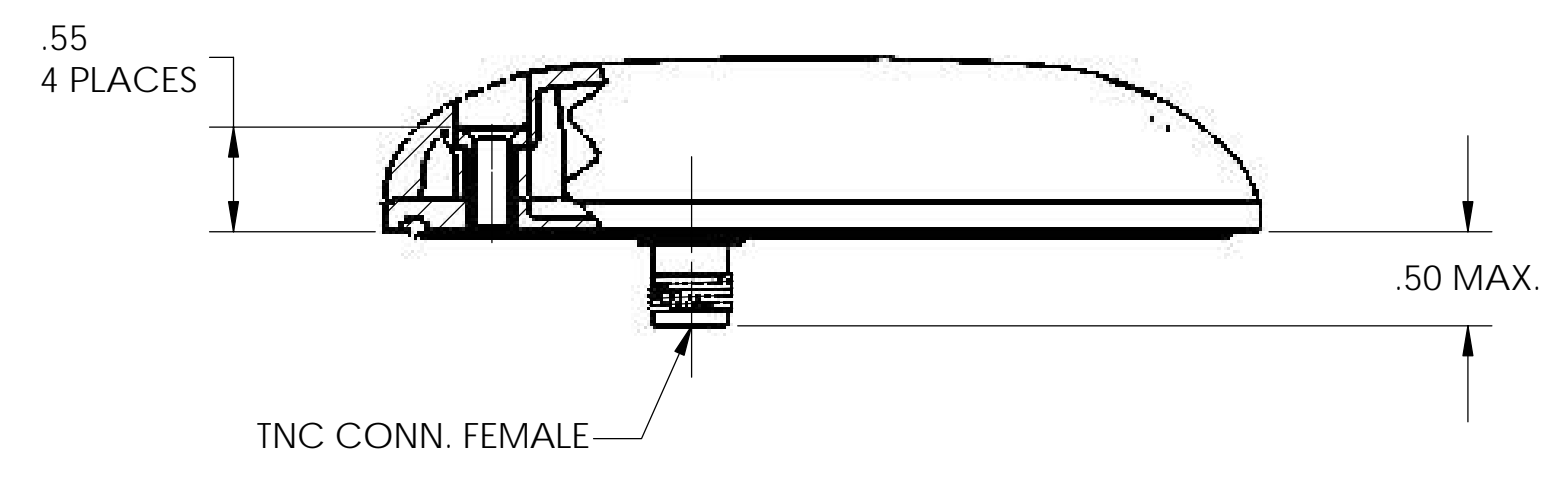
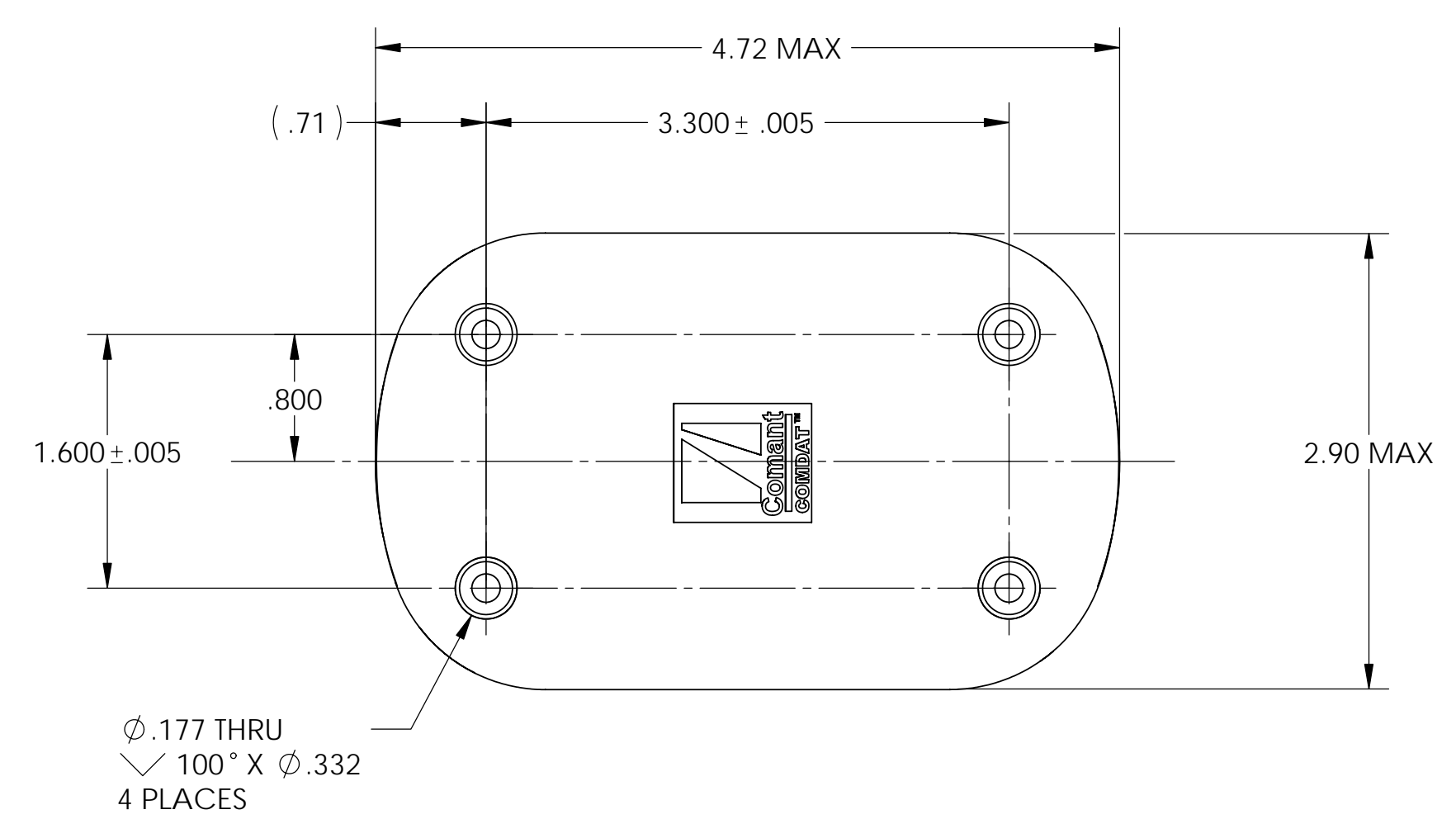
WARNING: Use factory supplied drawings and specifications for installation. Refer to FAA AC 43.13-2B for installation guidelines.

For further information please contact:

Cobham SATCOM Airborne Systems
577 Burning Tree Road
Fullerton, California 92833 USA
Tel: (01) 714-870-2420
Fax: (01) 714-870-5133
Email: comant@cobham.com

THE INFORMATION CONTAINED IN THIS DRAWING IS THE SOLE PROPERTY OF Comant Industries, Inc. ANY REPRODUCTION IN PART OR WHOLE, WITHOUT THE WRITTEN PERMISSION OF Comant Industries, Inc. IS PROHIBITED.

REVISIONS			
LTR	DESCRIPTION	DATE	APPROVAL
A	RELEASED DRAWING	HN 12/01/06	DH 12/04/06
B	REF ECN 07-52	HN 3/15/07	AV 3/15/07



INSTALLATION DRAWING

ASSEMBLY DRAWING C42807

UNLESS OTHERWISE SPECIFIED DIMENSIONS ARE IN INCHES TOLERANCES ON DECIMALS .XX ± .03 .XXX ± .010 FRACTIONS ± 1/16 ANGLES ± 1° MACHINE FINISH 125 ✓ PER ANSI-B46.1 REMOVE BURRS AND SHARP EDGES .015 MAX MEET DIMENSIONS BEFORE PLATING DIMENSIONS ARE PER ASME Y14.5M MATERIAL : ..	CONTRACT NO.			
	APPROVALS		DATE	
	DRAWN	H. NGUYEN	12/01/06	
	CHECK	D.HOLLOWAY	12/04/06	
	ENGR	D.HOLLOWAY	12/04/06	
MFG	L.VELASQUEZ	12/04/06		
QC	S. ADAMS	12/04/06		
DWG SIZE D	CODE IDENT 51351	DWG. NO. CI 428-200	REV. B	
DO NOT SCALE DRAWING		SCALE: 1:1	CAD FILE: --	SHEET : 1 OF 2

DWG NO CI 428-200 REV. B