

Comant CI 102

Marker Beacon

COBHAM

The most important thing we build is trust

CI 102 Marker Beacon

Designed for use with the modern, high sensitivity marker beacon receivers. Small and lightweight, featuring 4-hole internal mounting for simple installation. Antenna assembly is enclosed in an injection molded radome which is impervious to the tough environments typical of the underside of an aircraft. Skydrol and rain erosion resistant. DC grounded to minimize accumulation of precipitation static.

Applications

Single and twin engine piston aircraft for applications of this antenna design. Consult your FBO or installation shop for best application information.

Frequencies Covered

75 MHz

Specifications

Electrical

Frequency	75 MHz
VSWR	1.5:1 Maximum / Return Loss -13.98 dB
Polarization	Parallel to mounting plane
Radiation Pattern	E-Field Parallel with Flight Direction
Impedance RF	50 Ohms
Resistance DC	DC Grounded
Power RF	Receive only

Mechanical

Weight	0.6 lbs
Height	2.15 inches
Finish	Valox Polyester
Connector	BNC (Female)

Environmental

Temperature	-55C to +85C
Altitude	45,000 ft

Federal Specifications

FAA TSO	C35d, Class A
RTCA MOPS	DO 138, DO 143
RTCA Environmental	DO-160A
Gasket	C10208



WARNING: Use factory supplied drawings and specifications for installation. Refer to FAA AC 43.13-2B for installation guidelines.

Order at:

Tel: 714-870-2420 Fax: 714-870-6294
Email: comantorders@cobham.com

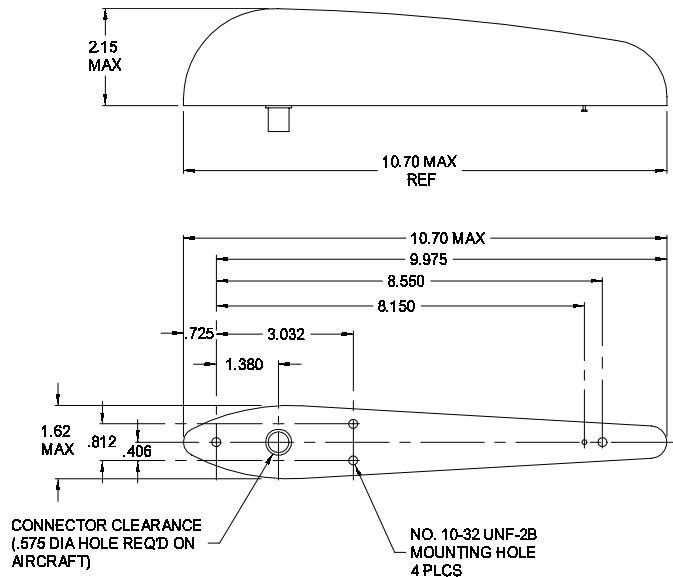
Frequency • 75 MHz

Designed for use with modern, high sensitivity marker beacon receivers. Small and lightweight, featuring 4-hole internal mounting for simple installation. Antenna assembly is enclosed in an injection molded radome which is impervious to the tough environments typical of the underside of an aircraft. Skydrol and rain erosion resistant. DC grounded to minimize accumulation of precipitation static.



MODEL CI 102 Marker Beacon

Electrical	
Frequency	75 MHz
VSWR	≤ 1.5:1 Maximum
Polarization	Parallel to the Mounting Plane
Radiation Pattern	Partially Downward
Impedance RF	50 Ohms
Resistance DC	DC Grounded
Power RF	Receive Only
Mechanical	
Weight	0.6 lb. Maximum
Height	2.15 in. Maximum
Material	Molded Radome
Finish	Polyurethane Enamel
Connector	BNC
Environmental	
Temperature	-55°C to +85°C
Altitude	45,000 ft.
Air Speed	400 Knots TAS at 25,000 ft.
Federal Specifications	
RTCA Environmental	DO-160A
Environmental Category	AASXXXXXXXXXX
FAA TSO	C35d
RTCA MOPS	DO-138, DO-143
ORDER OPTIONS	
Connector	
BNC	CI 102
TNC	CI 102-2
Color	
White	Standard
Gasket	
	C10208



Warning: Drawing not to scale. Use factory supplied drawings and specifications for installation. Call Comant for updated drawings.
©2002 Comant Industries Inc.